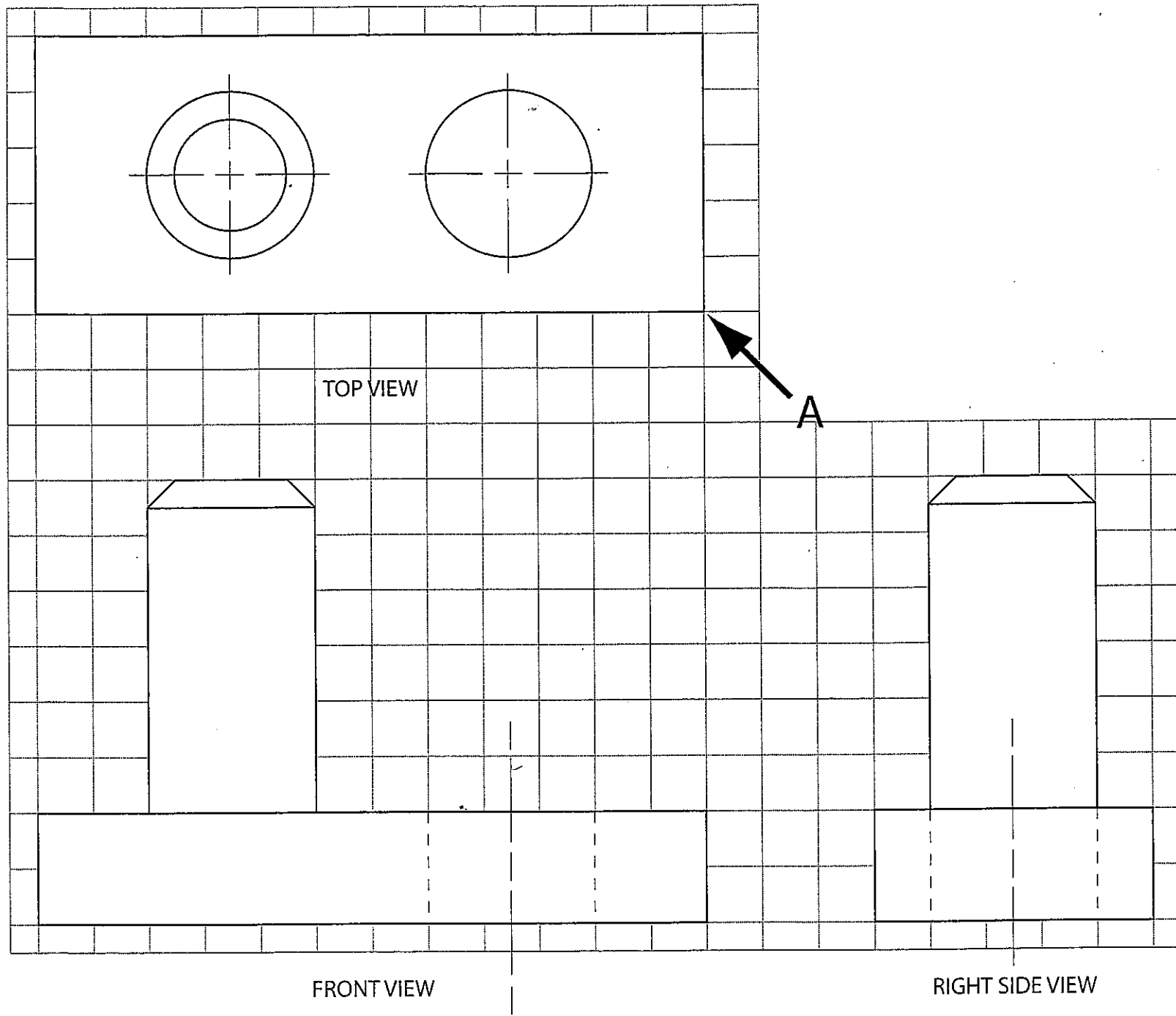


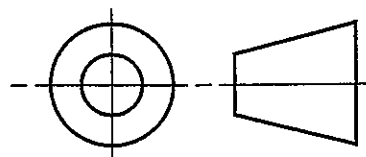
Below is an object shown in 3rd Angle Orthogonal Projection. Draw, in the space provided on this page, the ISOMETRIC representation of this object.

- Use the 10mm grid squares to get accurate measurements for the isometric drawing.
- Begin at the point shown on the page and draw the object from the direction of Arrow A.
- Draw lightly in pencil, then go over in 0.3 fineliner.
- Use a drawing board, T-square and 30° set square.
- Neatly print, in CAPITAL LETTERS, your name, date completed and drawing number in the space provided.



DRAWN BY

DATE



SCALE  
1 : 1

TASK 1  
ISOMETRIC DWG

DRG. No.